

@SIRE

THE INOVATING FRENCH TOOL FOR HORSE IDENTIFICATION

WHIRDEC - MAY 2022

1. The app « @SIRE »

The app « @SIRE »

Aim of the app

- To allow online fulfilment of the identification form including :
 - Identification of the mare and stallion
 - Declaration of the sex, colour, injected microchip
 - Drawing of the marks and whorls
 - Link with the QR-code of the blood sample(s)

Users

- Identifiers from IFCE and veterinarians



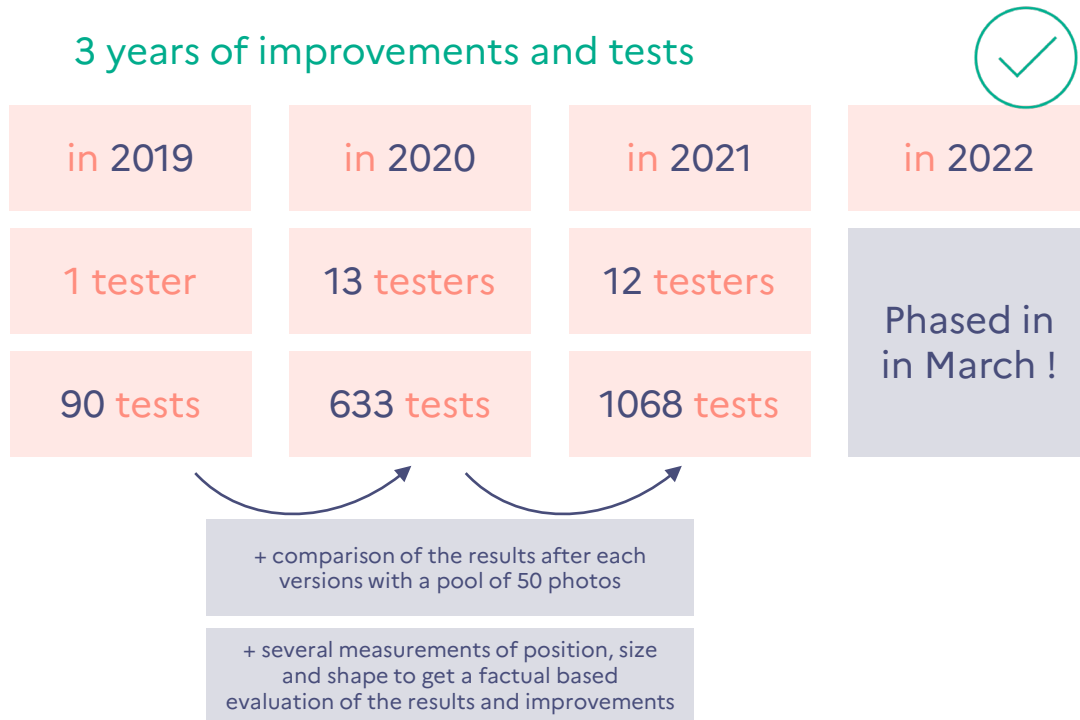
A close-up, low-angle shot of several horse legs and hooves. The legs are white with some dark markings, and the hooves are dark. The background is a blurred outdoor setting with grass and a fence.

2. PHOTOS HELP

History of the prototype

- Launched in **July 2018**
- Photos **collect** (about 4000)
- **A.I.** learning phases
- Picture analysis developments

3 years of improvements and tests



How it works

Using A.I. for 2 steps of the process

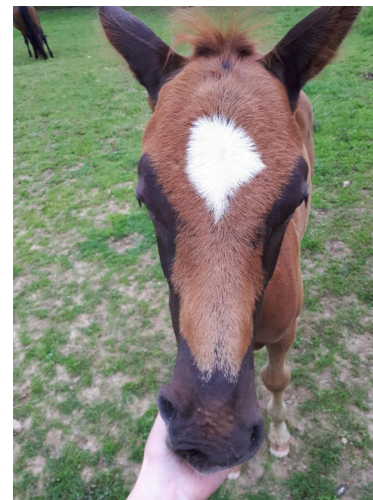
- Facial recognition
- Reference points position (brow, eyes and nose)

Completed by development for the rest of the process

- Colours analysis
- Size and position measurements



SHOW
RECORD #2



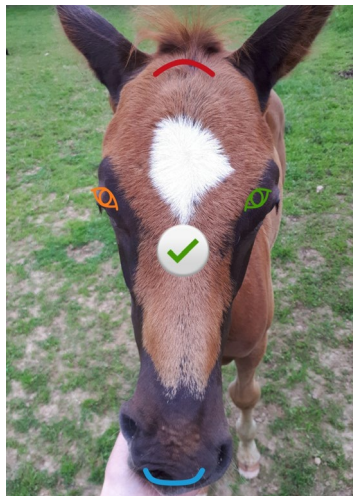
The app tries to recognise the face in the device screen, successfully or not.

IA

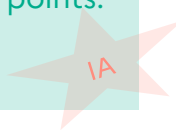


The user can take the picture when he wants.

How it works



The app
automatically finds
the reference points.



The user can adjust
the point positions
before launching the
end of the process.

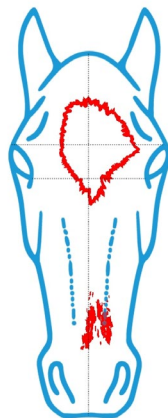
How it works



SHOW
RECORD #3



The app analyses colours, outlines white and pink parts and lays them down at the "as right as possible" place and size on the diagram.



The user can move, rotate, extend, reduce and complete the result and delete the parasites.

